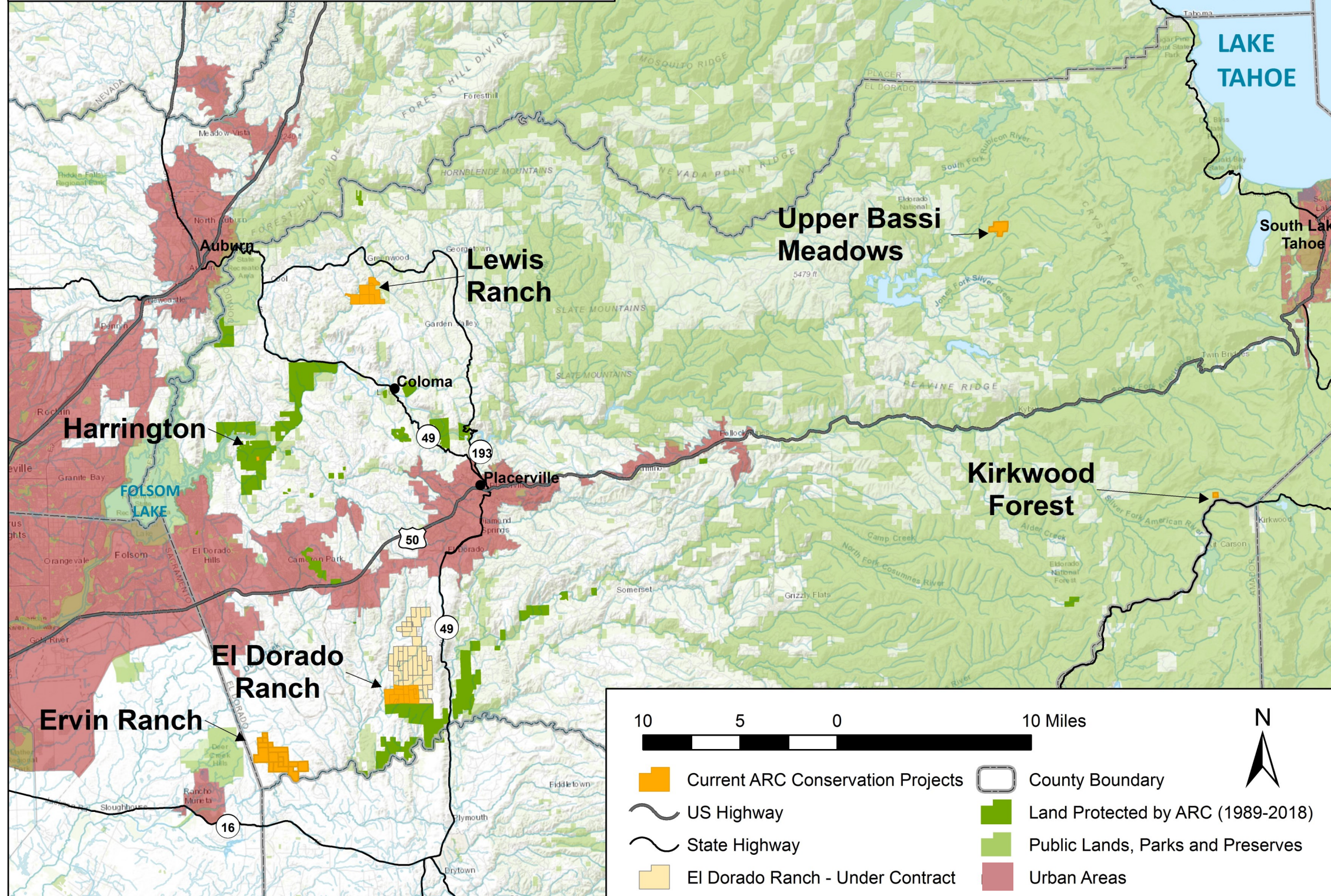




29 Years of Conservation

UPPER AMERICAN RIVER & UPPER COSUMNES RIVER



El Dorado Ranch (1,018 acres): This property is bordered to the east by the North Fork Cosumnes River, to the south by the Main Stem Cosumnes River and to the west by Big Canyon Creek. This purchase benefits several wildlife species including Bald eagle, Foothill yellow-legged frog, western pond turtle, hardhead, Sacramento pikeminnow, and many species of hawks and song birds. ARC has secured 76% of the purchase funding from State agencies and private foundations.

Ervin Ranch (1,781 acres): Just east of Deer Creek Hills Preserve and the Sacramento/El Dorado County line, this property fronts the main stem of the Cosumnes River. The property provides spawning gravels for winter-run Chinook salmon, and habitat for Foothill yellow-legged frog, Western pond turtle and an assemblage of native fishes including hardhead and Sacramento pikeminnow. Most of the ranch contains blue oak woodland and annual and perennial grassland habitats that support black-tailed deer, black bear, wild turkey and California quail. This ranch is at a substantial risk of being subdivided and developed for housing. A tentative map has been drawn up and 21 working wells have been drilled. The owner has agreed to allow the American River Conservancy to acquire the property over the next year. This acquisition is a top priority of the California Department of Fish and Wildlife (CDFW).

Harrington Knoll (15 acres): This beautiful knoll of blue oak woodland and riparian habitat is surrounded by the Salmon Falls Unit of the Pine Hill Preserve supporting an assemblage of eight endangered and rare plants. It is also home to black-tailed deer, black bear, turkeys, mountain lion, bobcat and coyote.

ARC has secured approximately 92% of the funding necessary to acquire this property.

Kirkwood Forest (40 acres): Owned by a timber/logging company, this small inholding within the Eldorado National Forest is in a high recreation area between Silver and Caples Lake, near Kirkwood. ARC has agreed to acquire this parcel for \$40,000 and place it within protected, public lands ownership.

Lewis Ranch (965 acres): This ranch is immediately northeast of the Coloma-Lotus Valley and fronts three miles of Greenwood Creek, a tributary to the South Fork American River. The property provides diverse conifer, oak woodland, and riparian habitats for rainbow trout, hardhead, Sacramento pikeminnow, Western pond turtle, Foothill yellow-legged frog, black-tailed deer, bear, mountain lion, raptors, and songbirds.

Upper Bassi Ranch (320 acres): This high elevation forest and mountain meadow system is immediately west of the Desolation Wilderness, east of Union Valley Reservoir and fronts Bassi Creek, a tributary to the South Fork American River. The mixed conifer, meadow and riparian habitat provides exceptional habitat to black bear, black-tailed deer, mountain lion, Mountain yellow-legged frog, rainbow trout, bald and golden eagles, raptors and songbirds. This private ranch is an inholding within the Eldorado National Forest and in an area of popular hiking and equestrian trails.